

بِسْمِ اللَّهِ الرَّحْمَنِ الرَّحِيمِ



Written by Hack_1Killer

**For fast access better
performance and excellent
management**

مشاركة بعنوان:
للوصول لأداء ممتاز وإدارة النظام بشكل أفضل.

**Xp
Windows**

.Xp

Server 2003

Graphical

GUI

User Interface

Desktop

. run

:Desktop /

:



toolbar

.desktop

arrange

: show desktop icon

icons by



quick launch bar

longhorn

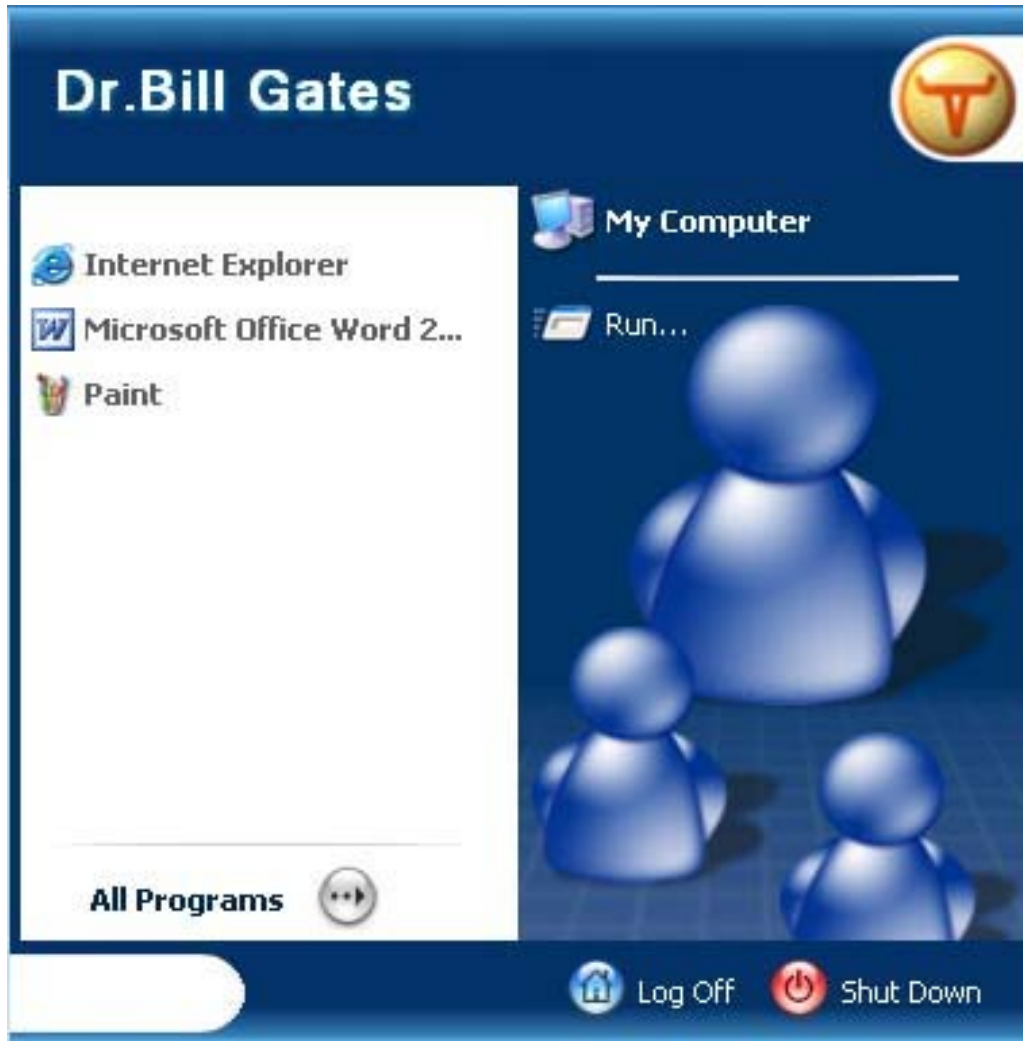
:transformation pack



.longhorn

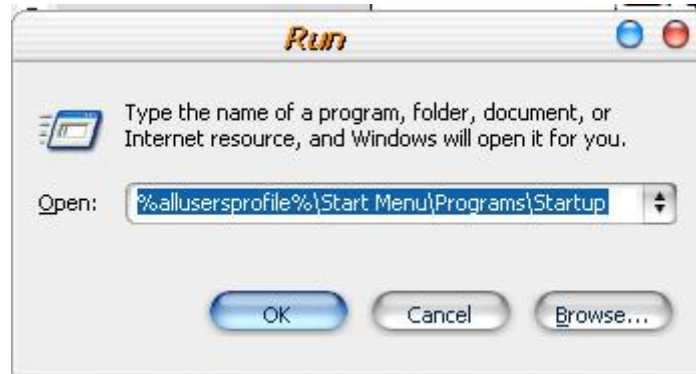
run /

RUN



RUN

: **RUN**



+ R) winlogo+R

RUN

.(Alt

Xp

:

.2000

. 2003

:

.1

Control Panel

CPL

Extension

add/remove programs

Run: appwiz.Cpl

:

.2

:

Command name	Command interface
Access.cpl	Accessibility options
appwiz.cpl	add/remove programs
desk.cpl	Display properties
Firewall.cpl	Windows firewall only with SP2
hdwwiz.cpl	Add /remove hardware
inetcpl.cpl	Internet properties
intl.cpl	Regional and language options
joy.cpl	Game controllers
main.cpl	Mouse properties
mmsys.cpl	Sounds and audio devices properties
ncpa.cpl	Network connections
nusrmgr.cpl	User accounts
odbc32.cpl	ODBC data source administrator
powercfg.cpl	Power options properties
sysdm.cpl	System properties
telephon.cpl	Phone and modem options
timedate.cpl	Date / time properties
wscui.cpl	Windows security center only with SP2
wuauclt.cpl	Windows Updates only with SP2

Microsoft management console (MMC)

:

Command name	Command interface
certmgr.msc	Certificates
ciadv.msc	Index service
compmgmt.msc	Computer management
devmgmt.msc	Device manager
dfrg.msc	Disk defragmenter
diskmgmt.msc	Disk management
eventvwr.msc	Event viewer
fsmgmt.msc	Shared folders
gpedit.msc	Group policy
lusrmgr.msc	Local users and groups
ntsmgr.msc	Removable storage
ntmsoprq.msc	Removable storage operator requests
perfmon.msc	Performance
rsop.msc	Resultant set of policy
secpol.msc	Local security settings
Services.msc	Services
wmimgmt.msc	Windows management infrastructure

: EXE

-2

:

Command Interface	Command name
Auoexec.net	Edit the autoexec.net file /* open it with notepad /*
explorer.exe	windows explorer
Notepad.exe	Notepad
Regedit.exe	Registry editor
winhelp.exe	Windows help
winhlp32.exe	Windows help
accwiz.exe	Accessibility wizard
Calc.exe	Calculator
charmap.exe	Character map
Chkdsk.exe	Disk scan
cleanmgr.exe	Disk cleanup
cliconfg.exe	SQL server client network utility
clipbrd.exe	ClipBook viewer
Cmd.exe	Windows Dos shell
Control.exe	Control panel
Control userpasswords2	Users account /*for auto login also/*
dcomcnfg.exe	Components services
ddeshare.exe	DDE share on \\pcName
Dialer	Phone Dialer Phone Dialer
Drwtsn32.exe	Dr. Watson for windows
dvdplay.exe	DVD player (windows media player)
dxdiag.exe	DirectX diagnostic Tool
eudcedit.exe	Private character editor
Eventvwr.exe	Event viewer
FreeCell.exe	FreeCell game
FxsCInt.exe	Fax console /* only if you installed fax SVC/*
Helpctr	Help and support center
hypertrm.exe	HyperTerminal
iexpress.exe	Self extracting / installing package
Logoff	Log you off the system

Magnify.exe	Windows magnifier
mmc.exe	Microsoft management console tool
mobsync.exe	Synchronize GUI
mplay32.exe	Windows media player – old
Msinfo32.exe	System information
Mspaint.exe	Paint program
Mstsc.exe	Remote desktop
Narrator.exe	Windows narrator
Netsetup.exe	Network setup wizard
Ntbackup.exe	Backup or restore wizard
oobe/msoobe /a	Activation wizard
Osk.exe	On screen keyboard
Packger.exe	Object Packager
Perfmon.exe	Performance monitor
Progman.exe	Program manager
Rasphone.exe	Network connections
Regedit.exe	Registry editor
Regedt32.exe	Registry editor
Regwiz /r	Registration wizard
shrpublish.exe	Create share folder
Shutdown -i	Remote/local shutdown dialog window
Sigverif.exe	File signature verification
Sndrec32.exe	Sound recorder
Sndvol32.exe	Volume control
Sysedit.exe	System configuration editor
Syskey.exe	Syskey tool
Systeminfo.exe	System information
Taskmgr.exe	Task manager
telnet.exe	Window telnet client
Tourstart.exe	Windows XP tour
Tsdiscon.exe	Disconnect a session
Tsshutdn.exe	Shutdown remote pc
Userinit.exe	Go to my document
Utilman.exe	Utility manager
Verifier.exe	Driver verifier manager
Wab.exe	Address book
Winchat.exe	Windows chat /* for kiddies only/*
Winmsd.exe	System information

Winver.exe	About windows +License+memory
Write.exe	WordPad
Wscript.exe	Windows script host settings
Wupdmgr.exe	Go to windows update
%SYSTEMROOT%\system32\usmt\migwiz.exe	Files and setting transfer wizard
%SystemRoot%\System32\restore\rstrui.exe	System restore
explorer /e, ::{D6277990-4C6A-11CF-8D87-00AA0060F5BF}	Scheduled tasks Do copy and paste to execute this command!
\\computer Name or IP address	View local shares /* without the hidden ones/*

exe

:

:

Start >> Run >> winver

:

.3

:

. Dot " ." run

.run " \ " backslash

%Root partition%

:

Run

Start >> Run >> config

:

%systemroot%\system + %systemroot%\system32

recent

run

recent

.cookies

الإجراءات و الإعدادات المذكورة تتعلق بخطوات رئيسية , أذكر منها ما يلي :

- ١- تعطيل الخدمات الغير ضرورية في النظام أو التي لا تحتاجها .
- ٢- إستخدام المظهر الكلاسيكي للويندوز , والإبتعاد دائما عن XP themes لأنها تستهلك الذاكرة .
- ٣- إلغاء تجزئة القرص الصلب يوميا , وتشغيل أداة disk cleanUp wizard .
- ٤- إعطاء الأولوية في تخصيص موارد النظام للبرامج حتى تستجيب بشكل أسرع .
- ٥- عدم وضع الكثير من البرامج في وضع startup عند بداية التشغيل , ويكتفى بالبرامج المهمة فقط.

.xp

xp

:

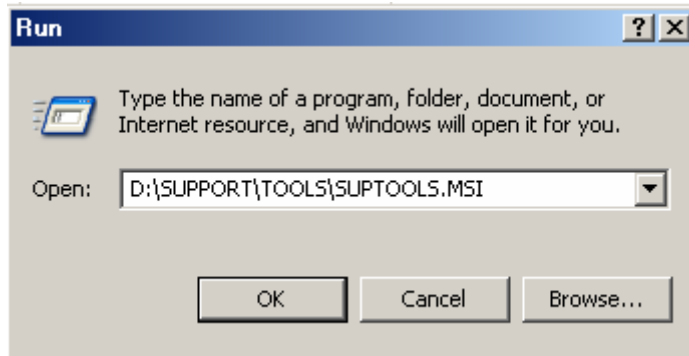
2003

(XP)

Run

CD-ROM

:



D

Next

c:\Program Files\Support

Tools

:

Start > programs > windows support tools >command prompt

:

2003

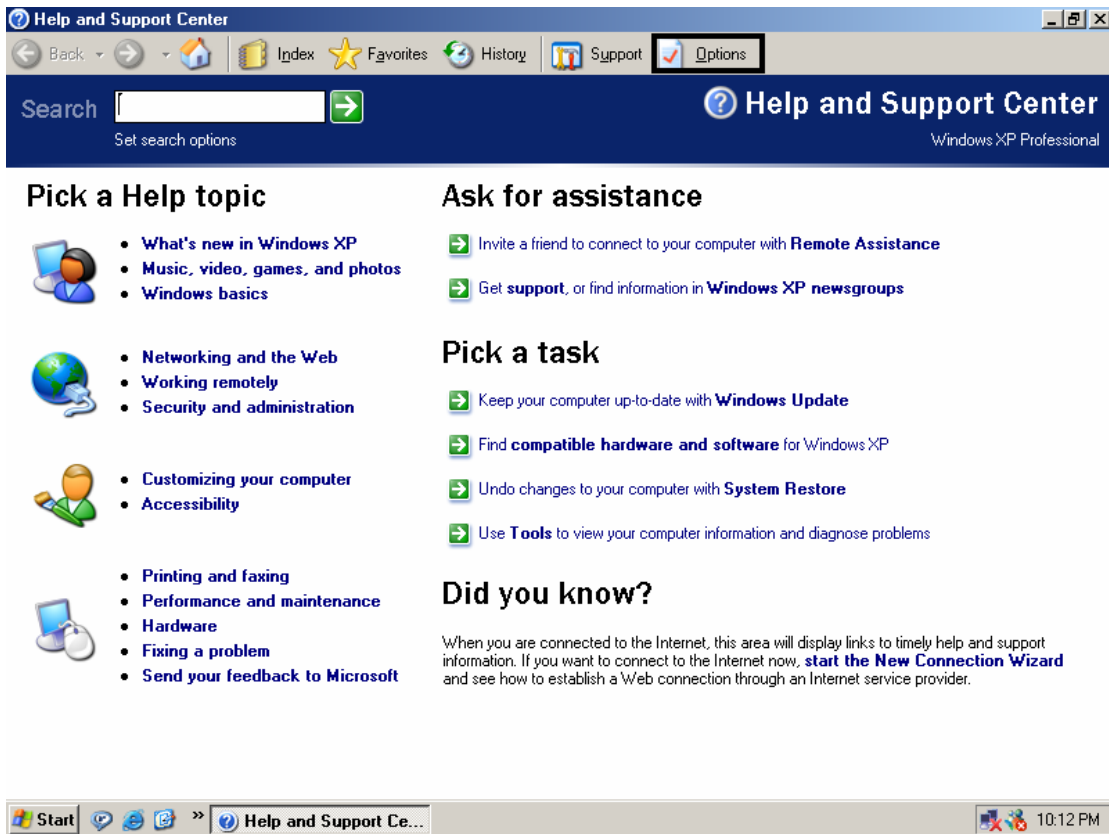
-1

:

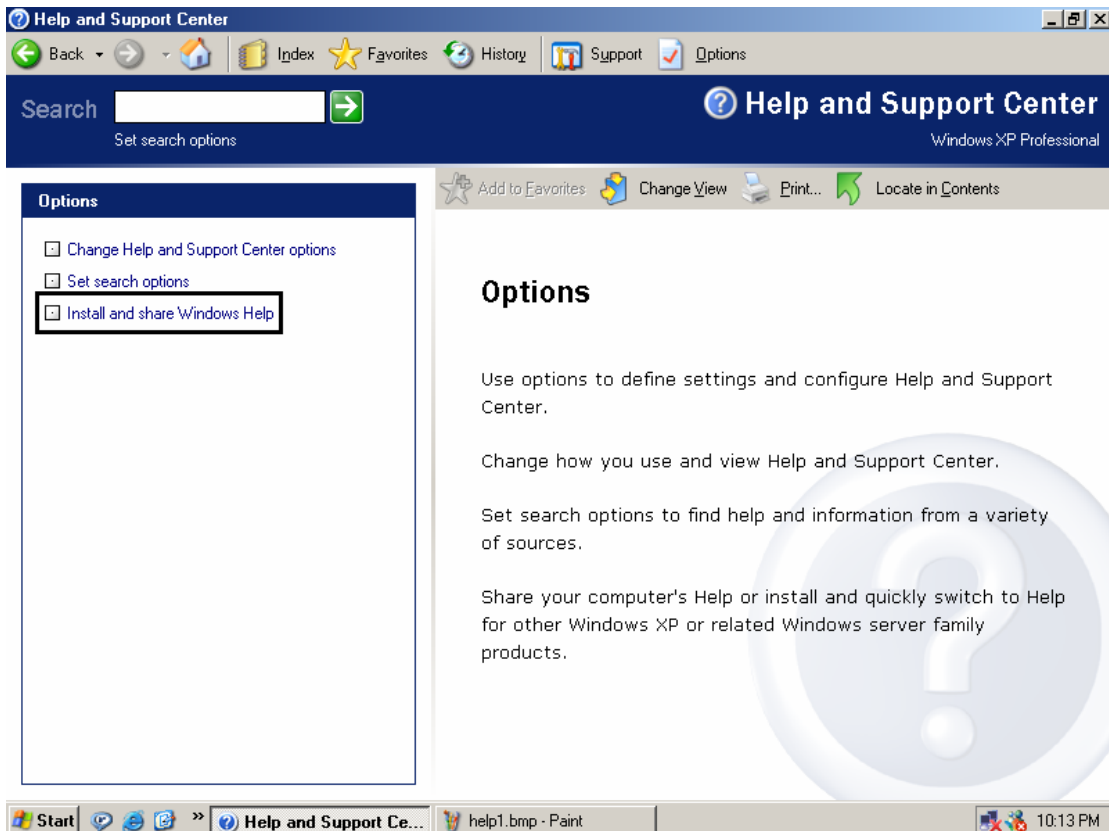
-2

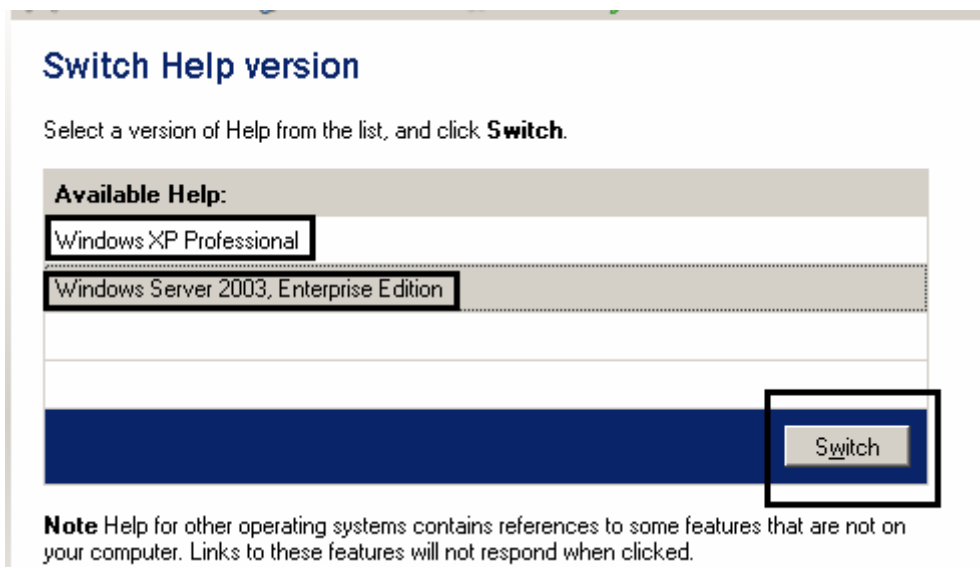
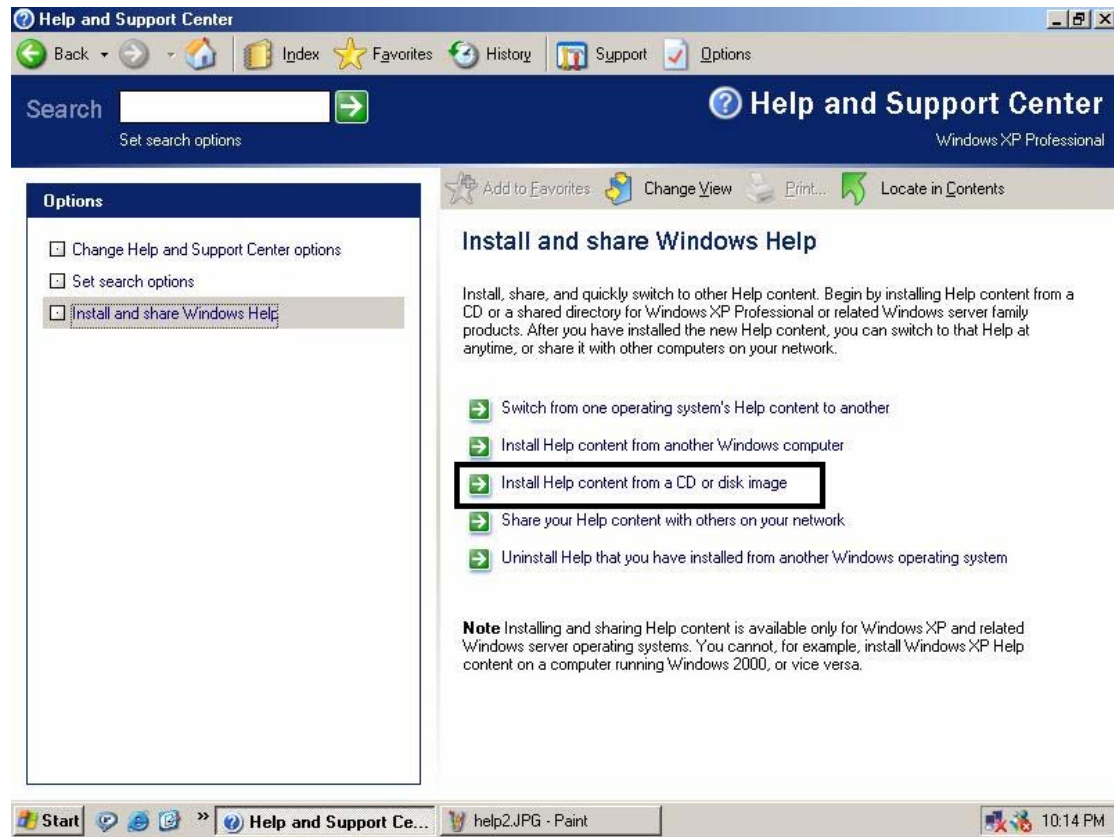
START > help and support

: options



: option





FIND (1)

(2)

(3)

FIND

. (4) **install**

. **2003**

XP

:

Start > help and support

(1) **options**

:(3)

(2)

: **switch**

. **XP**

⋮

profile

: .

١ - قم بإنشاء ملف يسمى OEMINFO.INI وضعه في مجلد system32 .

:

[General]

Manufacturer..... =

Model..... =

[Support Information]

Line1..... =

Line2.....=

Line3.....=

Line4.....=

()

OEMLOGO.BMP

-2

.system32

(120) × (180)

.bmp

Next topic: Installation windows server 2003

)

.(

Hack_1Killer /

Bill_Gaties@hotmail.com

Dr.BillGaties@Gmail.com

All rights reserved 2006

Microsoft
CERTIFIED
Systems Engineer

Microsoft
CERTIFIED
Systems Administrator