

**البازلت مادة أولية لصناعات هامة ونوعية في سوريا  
/ ابتكارات للقرن الواحد والعشرين /**

**الدكتور المهندس مزيد شرف – المؤسسة العامة للجيولوجيا والثروة  
المعدنية**

**/ 28-26 /**

**2009**

**Basalt Rocks :**

**-1**

•

.



•

•

.

•

( SiO<sub>2</sub> – 46-52% )

. /1/



Natural gift - basalt -(1)

∴ \_\_\_\_\_ -1-1

- 
- 
- 
- 
- 
- 
- 
- 

( 9-8)

∴

∴ \_\_\_\_\_ -2-1

- 
- 
- 
- 
- 
- 
- 
- 
- 
- 
- 
- 
- 
- 
- 
- 
- 
- 
- 
- 

./ /

-  
-

: \_\_\_\_\_ **-3-1**

( 3-2 )

SiO<sub>2</sub> – 42-47%, Na<sub>2</sub>O + K<sub>2</sub>O – 4-6%

( Inter Plate )

( ) ( ) ( )

Al<sub>2</sub>O<sub>3</sub> – 13-17%

MgO – 5-9%, CaO – 7-10%

. 3 / / 3-2.8 /

/ 1070-1050 /

/1/



# GEOLOGICAL MAP OF SYRIA الخريطة الجيولوجية السورية

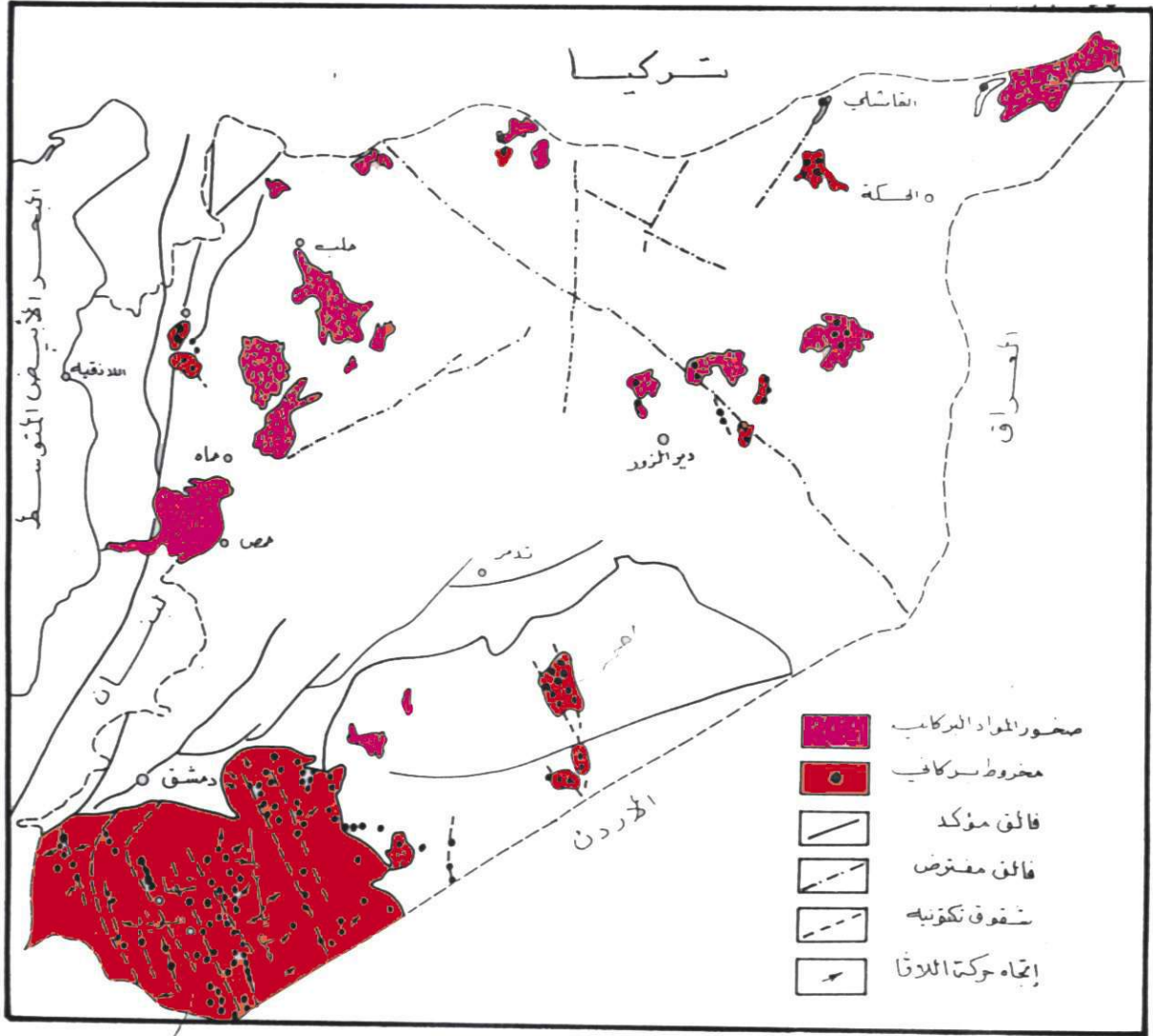
الجمهورية العربية السورية  
وزارة النفط والثروة المعدنية  
المؤسسة العامة الجيولوجيا والثروة المعدنية



I - منخفض جبل العرب  
II - عضية شين  
III - الهضام الغلاب  
IV - عضية حلب  
V - حوض شمال شرق سورية

QUATERNARY رابعي	CEENOZOIC العصر الجيولوجي الحديث العصر الثالث عشر بحدوده	CRETACEOUS الكرتاسي
NEOGENE النيوجين	PALEOGENE الپالوجين	TRIASSIC التراسي و الجوراسي
		OPHIOLITE Basins مخاريط الأوبوليت

0 100 200km



-(3)

/ 1962

1984 /

/1/

BN2		B1Q1 ( )		B5Q4		B6Q4		
N	X	N	X	N	X	N	X	
37	1.84	20	1.95	52	1.49	25	1.37	<b>K.Cal. / m.h.c°</b>
37	2115	20	1095	33	380	32	250	
12	7.2	12	12.8	13	27.23	15	20.27	%
12	4.00	12	5.28	13	8.13	15	10.32	%
12	2.93	12	2.84	13	2.25	15	2.28	<sup>3</sup> /
12	3.01	12	3.00	13	2.98	15	2.95	<sup>3</sup> /

: \_\_\_\_\_ -2

---

---

---

---

---

---

---

\_\_\_\_\_

\_\_\_\_\_ -1-2

/ SiO<sub>2</sub>-

./

1200-1300

: \_\_\_\_\_

-

-

-



/ -  
 ./ -  
 / MT= 2.5-6.0 / / MK= 1.1-3.0 / -  
 /3/ / R= 2.2-4.4 / -  
 ./ / -  
 / -  
 / -  
 ./ -  
 MgO Al2O3 -  
 MgO -  
 / FeO, Fe2O3, CaO, MgO, -  
 Al2O3, SiO2 /  
 ./ SiO2 / -  
 / Na2O + K2O / -  
 ./ -  
 /2/ -  
 : /2/

	Na2O + K2O	TiO <sub>2</sub>	MgO	CaO	Fe <sub>2</sub> O <sub>3</sub> + FeO	Al <sub>2</sub> O <sub>3</sub>	SiO <sub>2</sub>	
2.0	2.5	0.9	3.0	6	5	12	45	%
3.5	6.0	2.0	7	12	15	19	60	%





: \_\_\_\_\_ -1-2-2

.	/200/	:	/10/	20-6	-
.		.	60-30	12-4	-
.		.	60-50	3-1	-
.		.	2 4-0.5	5-2	-

: \_\_\_\_\_ -

.	/	.	/	-
		/	/	-
/1000/		600	/	-
(			)	-

/ 2.5-2 /

:

0 /1.5/

.  
/8-6/

0

."

"

0

0

.

-  
-  
-  
-  
-  
-

: -2-2-2

/ /

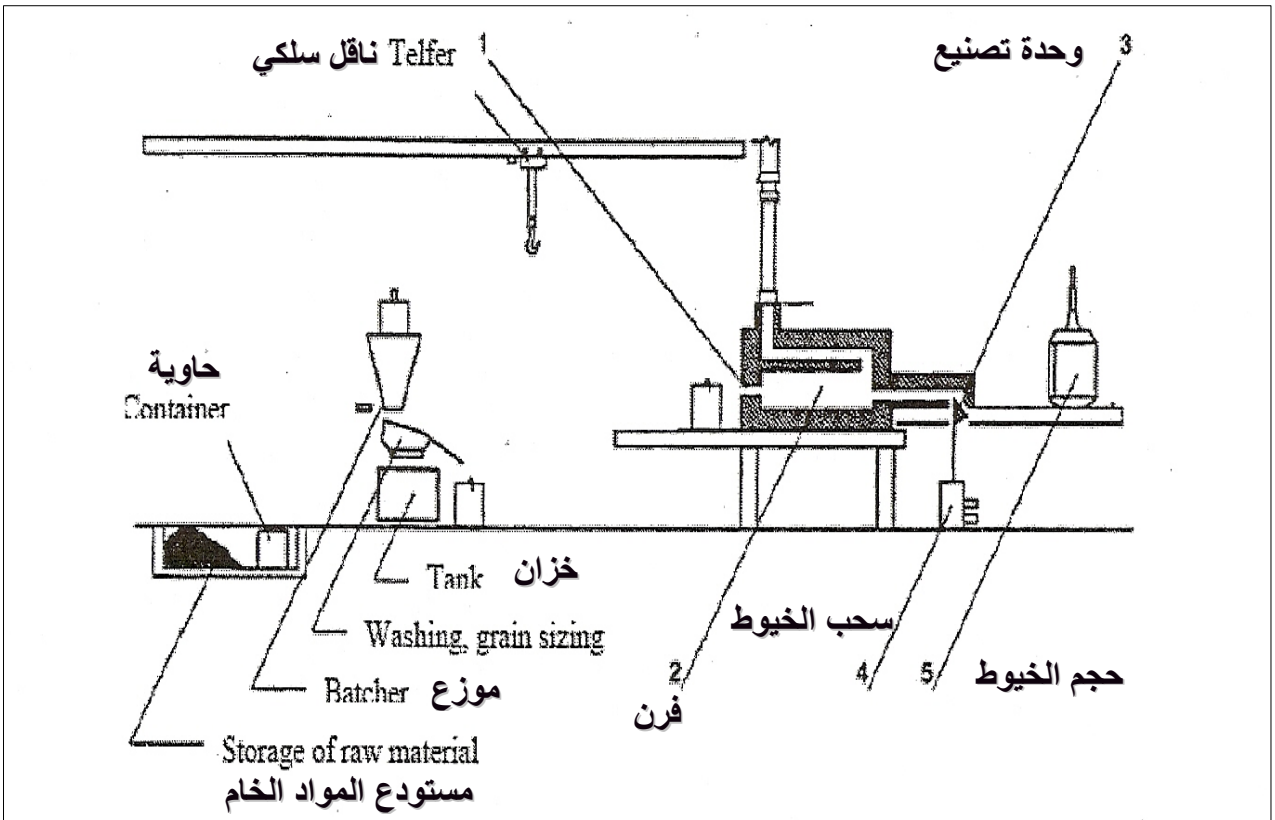
-

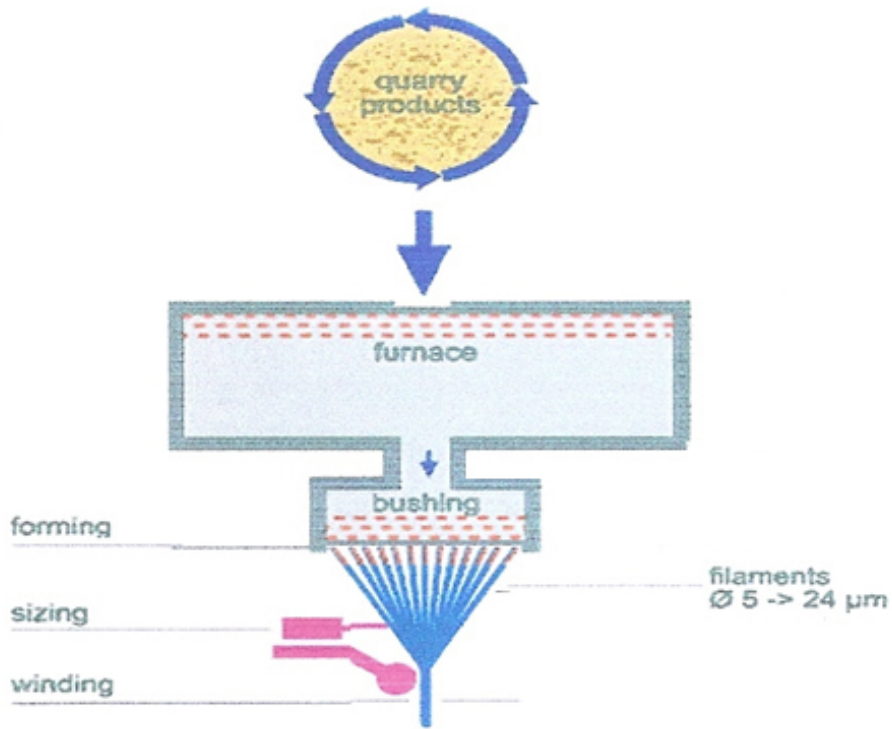
0  
2000 -

( **ToyoTa** ) 2002

0  
-

.





Products

Products



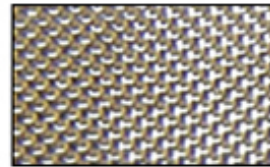
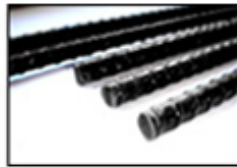
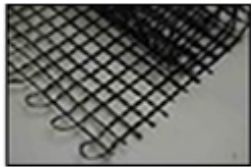
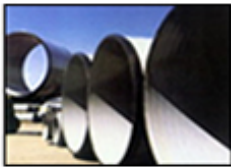
1

2

3

4

5



6

7

8

9

10

11

/

/

-(6)

1.5, 6-

3-

4-

10, 11-

8.2-

7-

9-



:

-3-2-2

/ 20-5 /

/1600-1400 /

: /6/

0

.

-

/

-

/ 1600-1500 /

%96 /

/

/

/

0

-

-

0

•

---



---



---



---



---



---



---



---



---

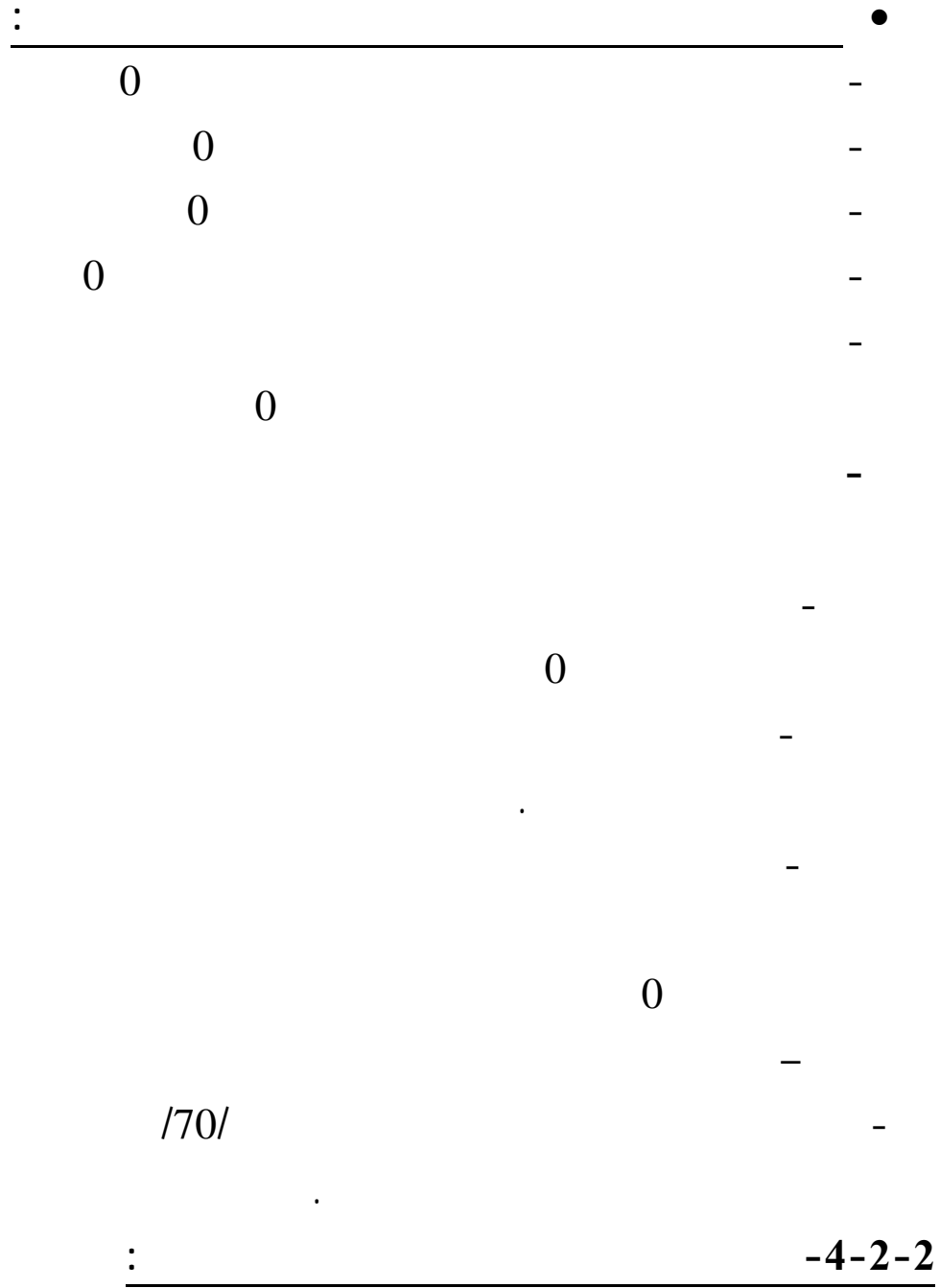


---

."

"

0



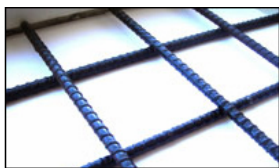
% 5-3

**Basalt Composite rods:**

*16-51*

*.171*

*171*



:(7)

**: Basalt Cloth /Fabrics**

-

./

-

/

./

/

) Kevlar

.(

)

(



**: Basalt mats and Geogrids**

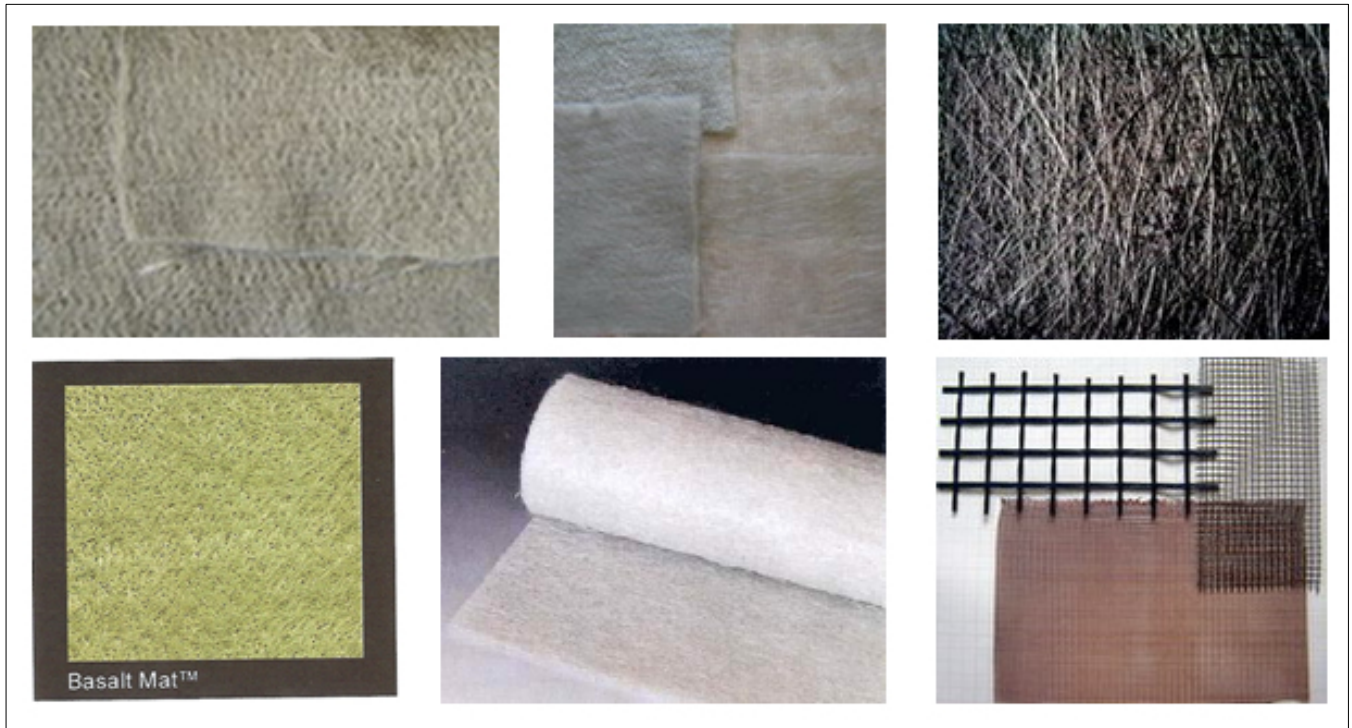
. ( ...

)

. /9/

(

)



**Basalt Pipes**

-

:

:

/20/

-

/4.5/

-

%10-8

-

/60/

-

. 2 / 100× 80 /

-

-



:

-5-2-2

/

/

*/9.5/*

*/4.5/*

*/1/*

*/1/*

*/60-50/*

\_\_\_\_\_

\_\_\_\_\_

\_\_\_\_\_

*/ Pushing /*

\_\_\_\_\_

\_\_\_\_\_

( )

:

0

-

-

-

/

/ 000

-

-

/

-

./...

-

-

0

-

0

-

0

-

-

-

-

-

-

-

-

-

-

-

-

:

⋮

-

-

-

-

-

-

0

⋮

-

-

-

-

000

⋮

-

0

-

-

-

.

0

-

⋮

-

-

.

⋮

-

-

-

/

-

0

-

-

-

⋮

-

-

-

-

-

-

./...

-

0

:

-



/

-

/

-

0

-

-

) **Defense aims**

-

. ( ....

-

AL<sub>2</sub>O<sub>3</sub> – 13-17%

Mgo- 5-9%

Na<sub>2</sub>O<sub>3</sub> + K<sub>2</sub>O<sub>3</sub> – 4-6% SiO<sub>2</sub> – 42-47%

/ 1070-1050 /

:

Na<sub>2</sub>O + K<sub>2</sub>O – 4-6%, Fe<sub>2</sub>O<sub>3</sub> + FeO – 12-15%, TiO<sub>2</sub> – 2-4% ,  
MgO – 5-10%, CaO – 9-10%, Al<sub>2</sub>O<sub>3</sub> – 13-16%, SiO<sub>2</sub> – 42-47%

-

. /3/

/A/

/3/

	Sample	SiO <sub>2</sub>	Al <sub>2</sub> O <sub>3</sub>	TiO <sub>2</sub>	Fe <sub>2</sub> O <sub>3</sub> + FeO	CaO	MgO
	Berest	49.03	12.58	2.85	14.03	9.53	5.47
	Vasil	47.88	15.48	1.91	12.58	9.58	3.0
	A	45.25	19.01	1.46	13.7	7.25	8.4
	B	46.3	17.6	2.1	13.8	8.8	6.92

:

:

:

.

-

.

-

.

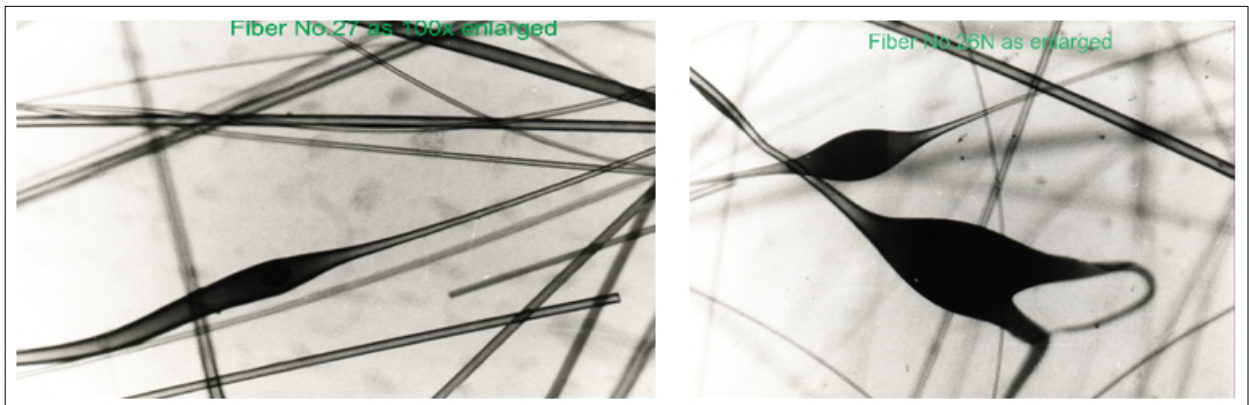
-

.

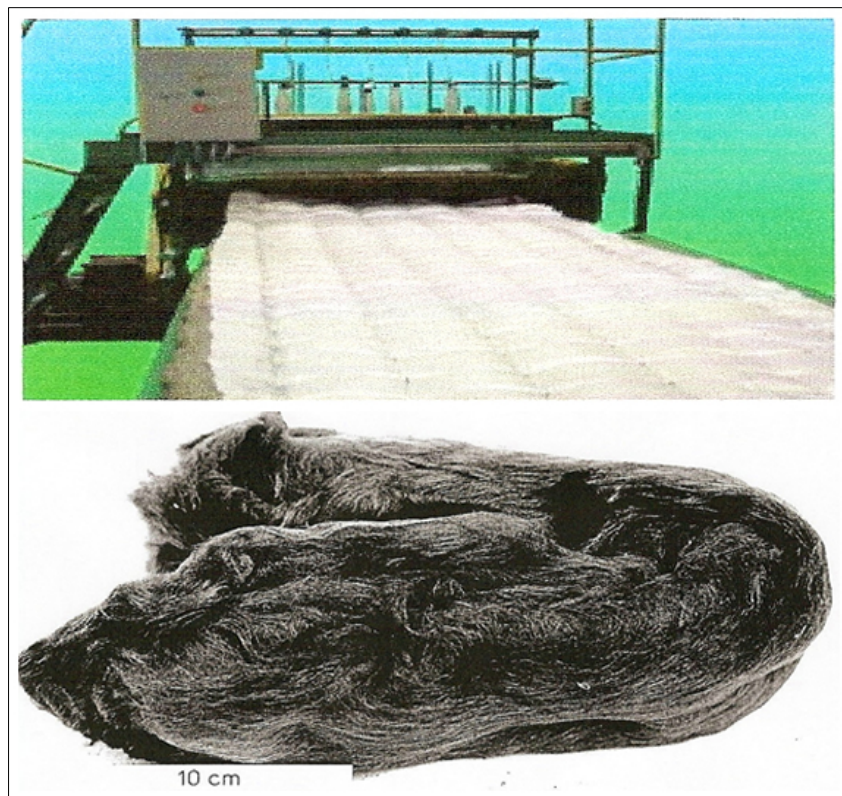
-

.

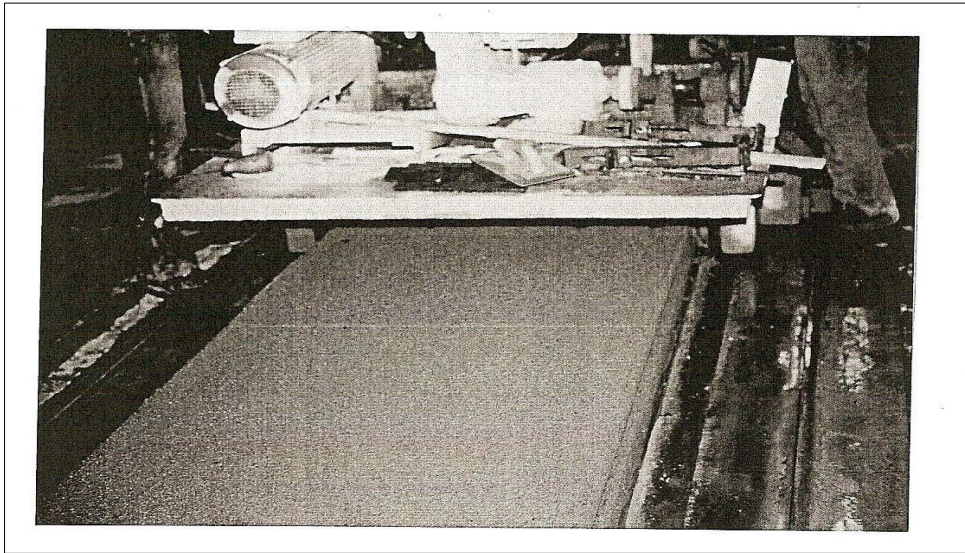
-



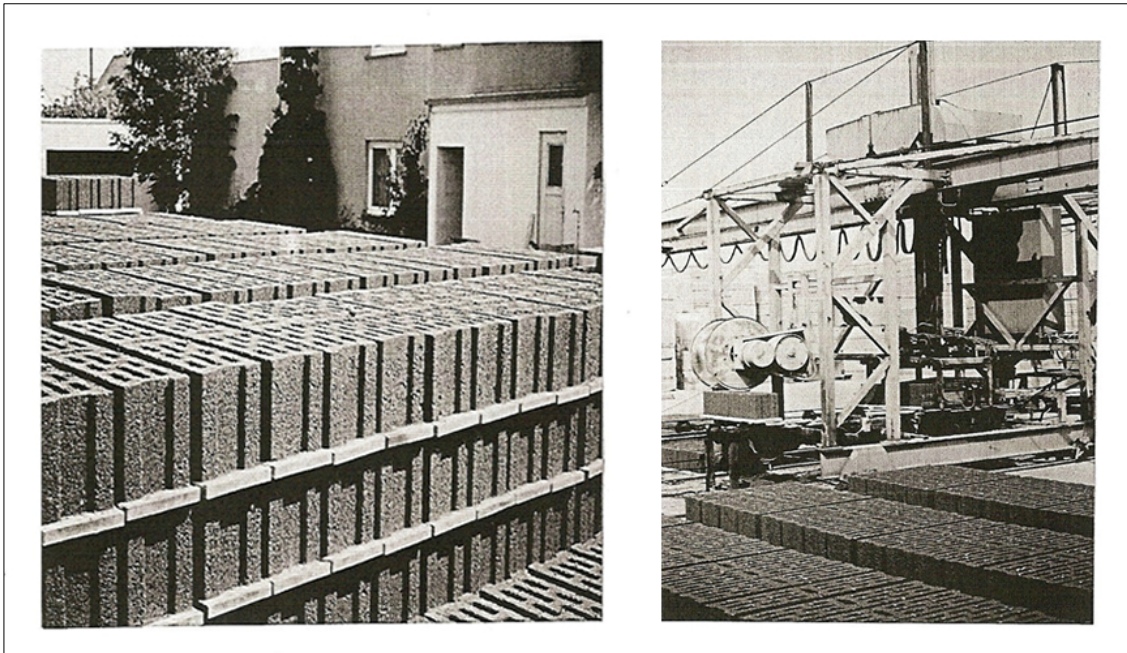
-(11)



-(12)



-(13)



-(14)

References :

- 1- Qiang Liu, Montgomery T. investigation of basalt fiber composite.... Society of plastic engineer 2005 . p.41.
- 2- M.Makhova, G. Gorbshev and oth . Production of super thin fiber from igneous rock melt " glass and ceramic " 1984 .
- 3- Tutakovo .v and oth . Reprocessing of basaltic Continuous filament covered with Polyvinyl acetate emulsion, Russia, 1992 .
- 4- NIISV , Techuologies , Kiev , Ukrania 2001 .
- 5- NIIG . Graft Techuologies, Moscow m Russia, 2003 .

– -6

. 1996

– -7

. 2006

– -8

"

. 2007 24-23 .